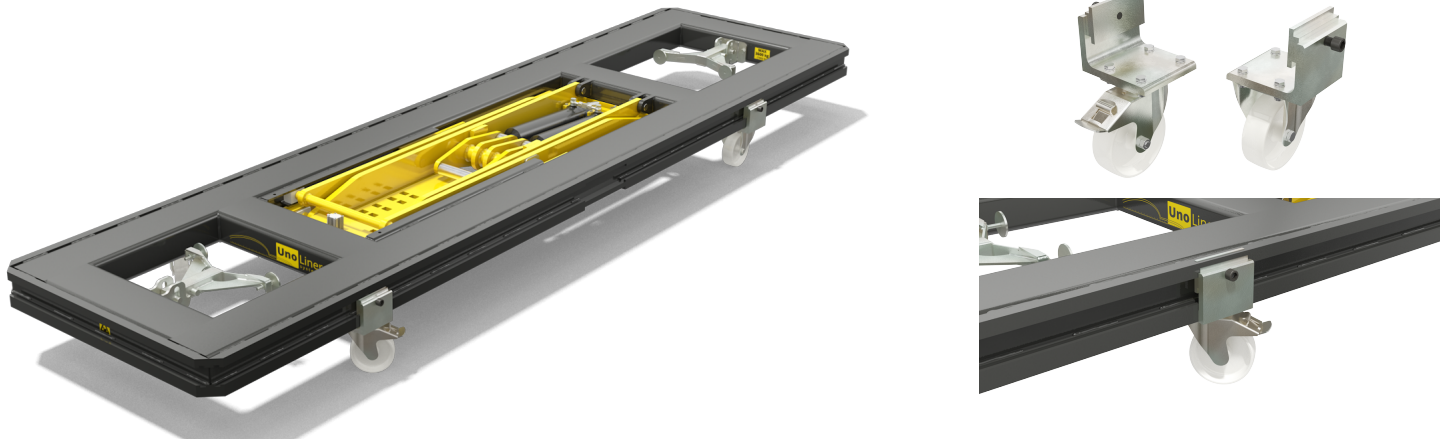


## W10 Bench Wheel Set



The UnoLiner W10 Bench Wheel Set consists of two swivel casters with brakes and two rigid casters. This set adds mobility to a UnoLiner *Drive-On* or *Roll-Over* chassis straightening bench. A UnoLiner bench frame without scissor lift outfitted with the W10 is an interesting option for repair shops with a modest budget. For benches equipped with a scissor lift, combine the W10 with the *W50 Manual Lift*.

### Features

- ✓ Two rigid casters
- ✓ Two swivel casters with brakes
- ✓ Single bolt mounting
- ✓ Quick Lock one-bolt locking system

### Technical data

Height	320	mm
Caster diameter	Ø150	mm

