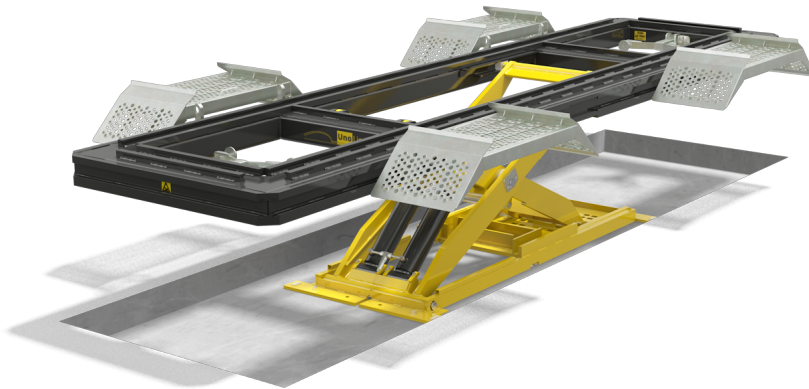


In-Ground Benches

CRS4600(T) In-Ground



The UnoLiner CRS4600 In-Ground is a perfect blend between the 4 and the 5.5 meter chassis straightening bench, mounted level with the workshop floor. This in-ground straightening bench boasts a bench frame length of 4.6 meters and is suitable for the L30 and L36 lift, offering its user a choice between a lifting capacity of 3000 kg and 4600 kg. The two-way locking variant, the CRS4600T, allows for more versatile accessory placement. CRS4600 benches are suitable for cars of all sizes, MPVs, SUVs, crossovers, pickup trucks, all-terrain vehicles, and light commercial vehicles. It is an ideal straightening, alignment, and collision repair bench, which can also be used as a multifunctional vehicle maintenance and general repair worksite.

Features

- ✓ 3 or 4.6 ton lifting capacity
- ✓ Level with the ground in its lowest position
- ✓ Multiple-angle 10-ton pulling ability
- ✓ Interchangeable UnoLiner accessories
- ✓ Mechanical and hydraulic safety systems
- ✓ Two-way locking variant

Technical data

Bench frame length	4610	mm
Bench frame width	1040-1160	mm
Min. bench height	0-30	mm
Max. bench height	1060-1130	mm
Max. load weight	3000-4600	kg
Width incl. ramps	1960-2080	mm

